



HES-6 Polyclonal Antibody

Catalog No	YP-Ab-01773
Isotype	IgG
Reactivity	Human;Rat;Mouse;
Applications	WB;IHC;IF;ELISA
Gene Name	HES6
Protein Name	Transcription cofactor HES-6
Immunogen	The antiserum was produced against synthesized peptide derived from human HES6. AA range:1-50
Specificity	HES-6 Polyclonal Antibody detects endogenous levels of HES-6 protein.
Formulation	Liquid in PBS containing 50% glycerol, 0.5% BSA and 0.02% sodium azide.
Source	Polyclonal, Rabbit,IgG
Purification	The antibody was affinity-purified from rabbit antiserum by affinity-chromatography using epitope-specific immunogen.
Dilution	WB: 1/500 - 1/2000. IHC: 1/100 - 1/300. ELISA: 1/10000.. IF 1:50-200
Concentration	1 mg/ml
Purity	≥90%
Storage Stability	-20°C/1 year
Synonyms	HES6; BHLHB41; Transcription cofactor HES-6; C-HAIRY1; Class B basic helix-loop-helix protein 41; bHLHb41; Hairy and enhancer of split 6
Observed Band	30kD
Cell Pathway	Nucleus .
Tissue Specificity	Muscle,Ovary,
Function	domain:Has a particular type of basic domain (presence of a helix-interrupting proline) that binds to the N-box (CACNAG), rather than the canonical E-box (CANNTG).,domain:The C-terminal WRPW motif is a transcriptional repression domain necessary for the interaction with Groucho/TLE family members, transcriptional corepressors recruited to specific target DNA by Hairy-related proteins.,function:Does not bind DNA itself but suppresses both HES1-mediated N box-dependent transcriptional repression and binding of HES1 to E box sequences. Also suppresses HES1-mediated inhibition of the heterodimer formed by ASCL1/MASH1 and TCF3/E47, allowing ASCL1 and TCF3 to up-regulate transcription in its presence. Promotes cell differentiation.,similarity:Contains 1 basic helix-loop-helix (bHLH) domain.,similarity:Contains 1 Orange domain.,subunit:Transcription repression requires formation of a complex wit



Background

This gene encodes a member of a subfamily of basic helix-loop-helix transcription repressors that have homology to the Drosophila enhancer of split genes. Members of this gene family regulate cell differentiation in numerous cell types. The protein encoded by this gene functions as a cofactor, interacting with other transcription factors through a tetrapeptide domain in its C-terminus. Alternatively spliced transcript variants encoding different isoforms have been described.[provided by RefSeq, Dec 2008],

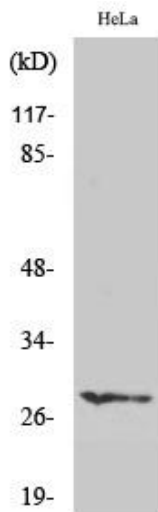
matters needing attention

Avoid repeated freezing and thawing!

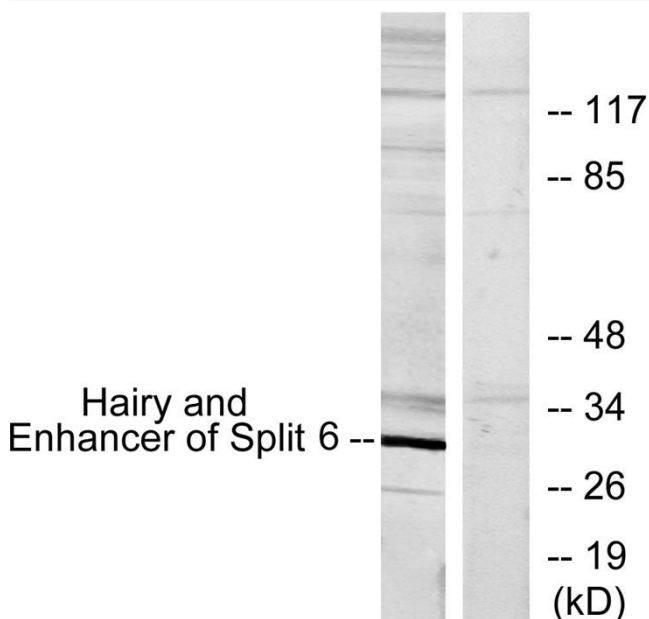
Usage suggestions

This product can be used in immunological reaction related experiments. For more information, please consult technical personnel.

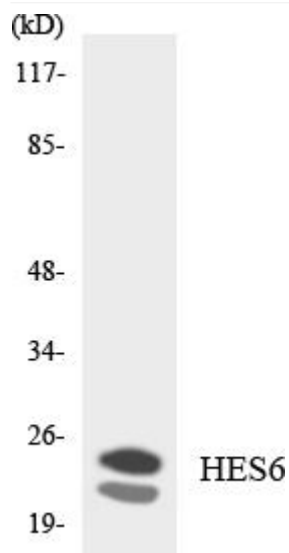
Products Images



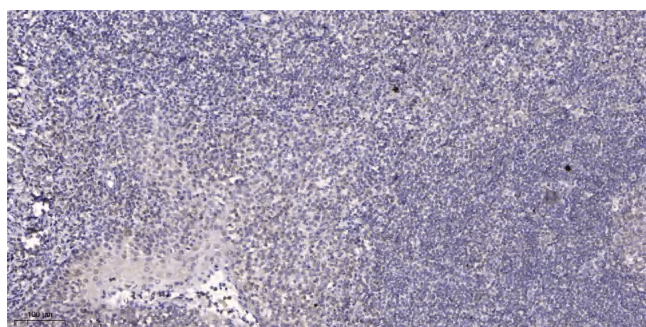
Western Blot analysis of various cells using HES-6 Polyclonal Antibody diluted at 1:1000 cells nucleus extracted by Minute TM Cytoplasmic and Nuclear Fractionation kit (SC-003, Inventbiotech, MN, USA).



Western blot analysis of lysates from HeLa cells, using HES6 Antibody. The lane on the right is blocked with the synthesized peptide.



Western blot analysis of the lysates from 293 cells using HES6 antibody.



Immunohistochemical analysis of paraffin-embedded human tonsil. 1, Antibody was diluted at 1:200(4° overnight). 2, Tris-EDTA,pH9.0 was used for antigen retrieval. 3,Secondary antibody was diluted at 1:200(room temperature, 45min).